



PRESENTS



IGNITE

ROBOTICS
ACCELERATE
AUTOMATION



IMMERSIVE
IDEA CULTURE

CLOUD



BIOTECHNOLOGY

VENTURE
RATE TEAM

TREPPING

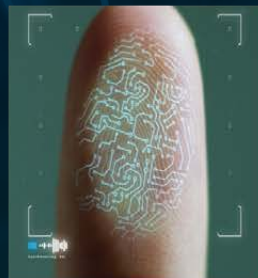
with SALLY FORMAN

SHARES ACCELERATION INTERFACE CREATION
EXIT BLOCK-CHAIN INVESTOR RISK

START UP



TRENDSETTING



VENTURE

BIG DATA SCALE
MOBILE

SEED TECH



TREPPING

with SALLY FORMAN

Innovation and entrepreneurship ignite when creativity and commerce combine. These two factors are staples of the fabric of New Orleans and across the South.

As a leading center of commerce in the history of the United States, New Orleans served as a launchpad for many industry titans to create and grow their companies. Some of these titans are still working today, paving the way for emerging talent that is forming new ventures every day. Additionally, with technology creating the next Industrial Revolution, startup founders are using new tools to generate success.

Sally Forman served as a co-founder and CEO of The Idea Village, the accelerator that kickstarted the entrepreneurial ecosystem that thrives today in New Orleans. In that role, she has worked with many of today's emerging ventures.

Along with advising and serving as a professional resource to these ventures, Forman often helps them prepare for their angel investor pitch. In 2009, Forman highlighted many leading entrepreneurs from Louisiana's past, present and future in a book entitled, *How They Did It: Profiles of New Orleans Entrepreneurs*.

In an effort to highlight the stories of those who built some of the most iconic companies we know today, as well as shine a spotlight on those building the iconic business of the future, we present *Trepping with Sally Forman*.

Trepping, a weekly program with host Sally Forman, will premiere in the Fall of 2019.

For more information, please contact:

Stan Gelpi at LAE Productions
stan@wlae.com or 504-669-3403

CJ Jumonville at LAE Productions
cj@wlae.com or 504-390-4782

Educational Broadcasting Foundation, Inc. (DBA WLAE-TV) is a 501c3 organization.
Tax ID #72-0920100.

HOSTED BY SALLY FORMAN

Sally Forman served as CEO of The Idea Village, an organization she co-founded in 2002 that ignited one of the leading entrepreneurial ecosystems in America. The Idea Village now serves as an innovation hub for entrepreneurial ventures throughout the South.

Forman served in the press offices of both Republican and Democratic administrations in Louisiana, and as Chief of Protocol in New Orleans and Director of Communications for the City of New Orleans. She penned a bestselling account of her experiences as Director of Communications entitled *Eye of the Storm: Inside City Hall during Katrina*.

Forman later wrote *How They Did It: Profiles of New Orleans Entrepreneurs*, a spotlight on entrepreneurs that helped shape the city's early commercial center. Forman is a communications consultant who coaches and mentors startups and executives on enhanced communications techniques and presentation skills training.



Sally Forman

DIRECTED AND PRODUCED BY STAN GELPI



Stan Gelpi

Stan Gelpi is a highly successful film/video producer and director with over twenty-five years experience, with thousands of television commercials, episodic TV, corporate films and documentary films in his portfolio. Gelpi's work for businesses such as Visa, Powerball Multistage Lottery and the Louisiana Office of Culture, Recreation and Tourism has garnered numerous awards including Addys, Tellys, Pollys, and an Emmy.

In addition, Gelpi has extensive experience in Print, Web, Broadcast and Satellite Distribution. As an independent producer, Gelpi brings a wealth of production, style, execution and distribution skills to the project.

TREPPING

with SALLY FORMAN

Regardless of our backgrounds, where we're from, or what we do for a living, these inspirational stories remind us there's an entrepreneur in each of us. The role of *Trepping* is to shine a spotlight on them.

The entrepreneur in you has the power to help WLAE tell these stories by becoming an underwriter for the series. *Trepping* will be offered for distribution to public television stations nationwide through American Public Television (APT). APT is a supplier of programming to over 350 public television stations including all of the major market stations. WLAE has a successful history of national television distribution having placed our Telly Award-winning films, *Leah Chase: The Queen of Creole Cuisine*, and *Fats Domino: Walking Back to New Orleans*, and our Emmy Award-winning *A Tribute to Toussaint* concert documentary with American Public Television.



Jim Dotson and Ron Yager

Executive Producers Jim Dotson and Ron Yager are the power team responsible for numerous award-winning film and television projects for WLAE and other media properties. In addition to the films named above, their projects include their multiple Emmy Award-winning travel series, *Go Coast: Louisiana*, the blockbuster film series *Glory Days: The Catholic League of New Orleans*, the Tricentennial trilogy of films: *Catholics in the Crescent City: The First 300 Years*, and *Fitz! The Life and Political Legacy of Jimmy Fitzmorris*.

SUPPORT LEVELS

PLATINUM
\$48,000+

GOLD
\$36,000+

SILVER
\$24,000+

BRONZE
\$12,000+

For more information on what each level of support includes, visit wlae.com/trepping.